

EMPLOYEE NEWSLETTER

APRIL 2018

Important 2018 Dates	
Sunday April 1	Easter
Tuesday April 17	Tax Day
Tuesday April 17	State of the County Address Annex Building 8:00am
Wednesday April 25	Administrative Professionals Day
Tuesday May 8	Truman Day County Offices Closed
Sunday May 13	Mother's Day
Monday May 28	Memorial Day County Offices Closed

Birthday Wishes

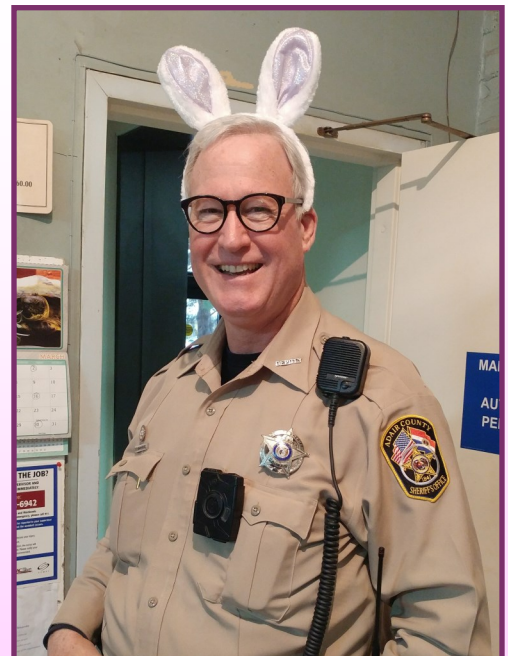
04/04	Melvin Bradshaw	Assessor's Office
04/06	Bill Sweitzer	Sheriff's Office
04/11	Sherry Treasure	County Clerk
04/28	Nathan Frazier	Sheriff's Office
04/30	Rick Schmidt	Sheriff's Office

Welcome New Employee

Jacob Reeves Sheriff's Office

Service Anniversaries

04/01	38 yrs.	Randall Snyder	Road & Bridge
04/07	4 yrs.	Bob McCarty	Road & Bridge
04/13	9 Yrs.	Rick Schmidt	Sheriff's Office
04/14	9 yrs.	Dale Standfuss	Maintenance
04/16	6 yrs.	Pam Ashford	Assessor's Office
04/18	21 yrs.	Jason Lene	Sheriff's Office
04/21	9 yrs.	Franz Kinkhorst	Sheriff's Office
04/23	1 yr.	Riley Merdinian	Sheriff's Office
04/23	1 yr.	Bill Sweitzer	Sheriff's Office
04/29	27 yrs.	Lonnie Harris	Road & Bridge



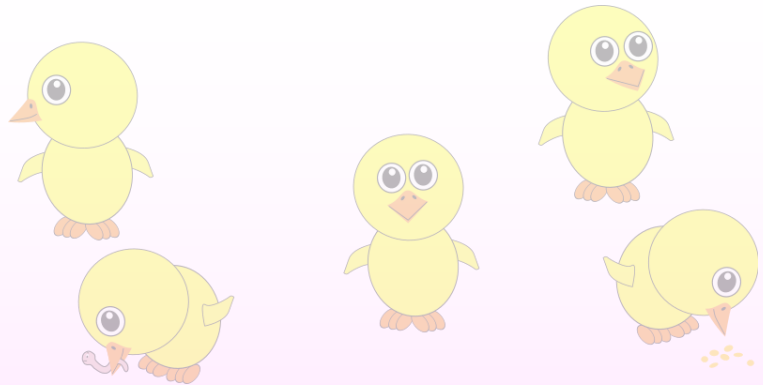
SOMEBUNNY is ready for Easter! Deputy Franz Kinkhorst was willing to have a little fun. Pretty sure Deputy Kinkhorst is 7 feet tall with the bunny ears on!

Group Benefit Services (GBS) 100% Coverage Preventive Care-Wellness Programs

IMPORTANT-Free only when delivered by a doctor or other provider in your plan's network.

Services for all adults

- Abdominal aortic aneurysm one-time screening for men of specified ages who have ever smoked
- Alcohol misuse screening and counseling
- Aspirin use to prevent cardiovascular disease for men and women of certain ages
- Blood pressure screening
- Cholesterol screening for adults of certain ages or at higher risk
- Colorectal cancer screening for adults over 50
- Depression screening
- Diabetes (Type 2) screening for adults with high blood pressure
- Diet counseling for adults at higher risk for chronic disease
- Hepatitis B screening-for people at high risk, including people from countries with 2% or more Hepatitis B prevalence, and U.S.-born people not vaccinated as infants and with at least one parent born in a region with 8% or more Hepatitis B prevalence.
- Hepatitis C screening for adults at increased risk, and one time for everyone born 1945 – 1965
- HIV screening for everyone ages 15 to 65, and other ages at increased risk
- Immunization vaccines for adults — doses, recommended ages, and recommended populations vary:
 - Diphtheria
 - Hepatitis A
 - Hepatitis B
 - Herpes Zoster
 - Human Papillomavirus (HPV)
 - Influenza (flu shot)
 - Measles
 - Meningococcal
 - Mumps
 - Pertussis
 - Pneumococcal
 - Rubella
 - Tetanus
 - Varicella (Chickenpox)
- Lung cancer screening- for adults 55 - 80 at high risk for lung cancer because they're heavy smokers or have quit in the past 15 years
- Obesity screening and counseling
- Sexually transmitted infection (STI) prevention counseling for adults at higher risk
- Syphilis screening for adults at higher risk
- Tobacco use screening for all adults and cessation interventions for tobacco users

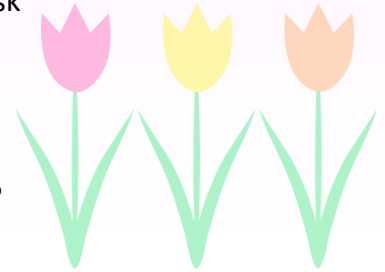


Group Benefit Services (GBS) 100% Coverage Preventive Care-Wellness Programs

IMPORTANT-Free only when delivered by a doctor or other provider in your plan's network.

Services for women

- Breast cancer genetic test counseling (BRCA) for women at higher risk
- Breast cancer mammography screenings every 1 to 2 years for women over 40
- Breast cancer chemoprevention counseling for women at higher risk
- Cervical cancer screening for sexually active women
- Chlamydia infection screening for younger women and other women at higher risk
- Domestic and interpersonal violence screening and counseling for all women
- Gonorrhea screening for all women at higher risk
- HIV screening and counseling for sexually active women
- Human Papillomavirus (HPV) DNA test every 3 years for women with normal cytology results who are 30 or older
- Osteoporosis screening for women over age 60 depending on risk factors
- Rh incompatibility screening follow-up testing for women at higher risk
- Sexually transmitted infections counseling for sexually active women
- Syphilis screening for women at increased risk
- Tobacco use screening and interventions
- Well-woman visits to get recommended services for women under 65



Services for pregnant women or women who may become pregnant

- Anemia screening on a routine basis
- Breastfeeding comprehensive support and counseling from trained providers, and access to breastfeeding supplies, for pregnant and nursing women
- Contraception: Food and Drug Administration-approved contraceptive methods, sterilization procedures, and patient education and counseling, as prescribed by a health care provider for women with reproductive capacity (not including abortifacient drugs). This does not apply to health plans sponsored by certain exempt "religious employers."
- Folic acid supplements for women who may become pregnant
- Gestational diabetes screening for women 24 to 28 weeks pregnant and those at high risk of developing gestational diabetes
- Gonorrhea screening for all women at higher risk
- Hepatitis B screening for pregnant women at their first prenatal visit
- Rh Incompatibility screening for all pregnant women and follow-up testing for women at higher risk
- Syphilis screening
- Expanded tobacco intervention and counseling for pregnant tobacco users
- Urinary tract or other infection screening

Group Benefit Services (GBS) 100% Coverage Preventive Care-Wellness Programs

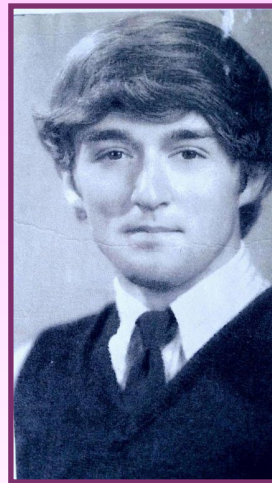
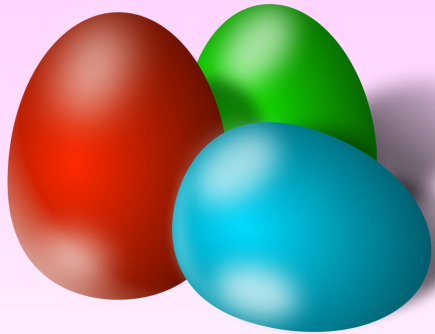
IMPORTANT-Free only when delivered by a doctor or other provider in your plan's network.

Services for Children (ages 0-17)

- Alcohol and drug use assessments for adolescents
- Autism screening for children at 18 and 24 months
- Behavioral assessments for children ages: 0 to 11 months, 1 to 4 yrs, 5 to 10 yrs, 11 to 14 yrs, 15 to 17 yrs
- Blood pressure screening for children ages: 0 to 11 months, 1 to 4 yrs, 5 to 10 yrs, 11 to 14 yrs, 15 to 17 yrs
- Cervical dysplasia screening for sexually active females
- Depression screening for adolescents
- Developmental screening for children under age 3
- Dyslipidemia screening for children at higher risk of lipid disorders ages: 1 to 4 yrs, 5 to 10 yrs, 11 to 14 yrs, 15 to 17 yrs
- Fluoride chemoprevention supplements for children without fluoride in their water source
- Gonorrhea preventive medication for the eyes of all newborns
- Hearing screening for all newborns
- Height, weight and body mass index (BMI) measurements for children ages: 0 to 11 months, 1 to 4 yrs, 5 to 10 yrs, 11 to 14 yrs, 15 to 17 yrs
- Hematocrit or hemoglobin screening for all children
- Hemoglobinopathies or sickle cell screening for newborns
- Hepatitis B screening for adolescents at high risk, including adolescents from countries with 2% or more Hepatitis B prevalence, and U.S.-born adolescents not vaccinated as infants and with at least one parent born in a region with 8% or more Hepatitis B prevalence: 11 – 17 yrs.
- HIV screening for adolescents at higher risk
- Hypothyroidism screening for newborns
- Immunizations for children birth to 18yrs- doses, recommended ages, and recommended populations vary:
 - * Diphtheria, Tetanus, Pertussis
 - * Haemophilus influenza type b
 - * Hepatitis A
 - * Hepatitis B
 - * Human Papillomavirus (PVU)
 - * Inactivated Poliovirus
 - * Influenza (flu shot)
 - * Measles
 - * Meningococcal
 - * Pneumococcal
 - * Rotavirus
 - * Varicella (Chickenpox)
- Iron supplements for children ages 6 to 12 months at risk for anemia
- Lead screening for children at risk of exposure
- Medical history for all children throughout development ages: 0 to 11 months, 1 to 4 yrs, 5 to 10 yrs, 11 to 14 yrs, 15 to 17 yrs
- Obesity screening and counseling
- Oral health risk assessment for young children ages: 0 to 11 months, 1 to 4 yrs, 5 to 10 yrs
- Phenylketonuria (PKU) screening for newborns
- Sexually transmitted infection (STI) prevention counseling and screening for adolescents at higher risk
- Tuberculin testing for children at higher risk of tuberculosis ages: 0 to 11 months, 1 to 4 yrs, 5 to 10 yrs, 11 to 14 yrs, 15 to 17 yrs
- Vision screening for all children



News From Around the County



GUESS WHO?

No...this is not one of the Beetles, but this young lad (who is a little older now) currently works for Adair County. Can you guess who it is?

Answer on page 6

ICS 300 Training



Commissioner Bill King attended NIMS (National Incident Management System) Incident Command Structure (ICS) 300 training March 13-15, 2018 at the Adair County Ambulance District in Kirksville, Missouri. ICS-300 provides training and resources for personnel who require advanced knowledge and application of the ICS. This course expands upon information covered in the ICS-100 and ICS-200 courses.

Commissioner King is the Emergency Management Coordinator for Adair County Government and is fulfilling the training associated with ICS plans which helps emergency management organizations, departments, and agencies develop preparedness capabilities for effective and efficient incident management. As a result, Commissioner King and other trained Adair County emergency responders can provide mutual aid to support incident management in other jurisdictions, if requested.

Clerk's Office Hosts Informational Seminar for Candidates



On Tuesday March 20, 2018, the Clerk's Office hosted a Campaign Finance Seminar presented by the Missouri Ethics Commission. The seminar was for all individuals interested in running for public office in Missouri. The event, held at the Adair County Annex Building, was well attended with a diverse group of candidates interested in both State and County elected positions.

News from Around the County



Local officials and administrators from across Adair County will gather on Tuesday April 17, 2018 at 8:00am at the Adair County Annex Meeting Room for the "State of the County Address".

The meeting will include status reports and information from the following entities:

- Adair County Nursing Home (DBA: Twin Pines Adult Care Center)
- Ambulance District
- County Commission
- Health Department
- Public Library
- SB40 and Developmental Disabilities Board

The public is welcome to attend with coffee and donuts served prior to the meeting.

The State of the County Address is sponsored by the Kirksville Area Chamber of Commerce.



CONGRATULATIONS to Jess Townsend, Daughter of our very own Angie Farmer (Recorder's Office), who recently had her book Infinity published. The book, now available through Amazon, is a young adult romance novel that Jess has been writing in her spare time for the past 2 years. Angie is very proud of her daughter's hard work in getting her book published and is excited to share it with everyone!

Pictured right: Angie shows the Kindle version of her Daughter's novel. The hard copy version will be available April 1, 2018



Easter will undoubtedly be a HARE raising experience for these three! Joe Nicol, Dale Standfuss, and Kim Kriegel (pictured left) from the Maintenance Department would also like to remind folks to refrain from eating any brown jelly beans left on the Courthouse lawn by the Easter Bunny.

Adair County Employees are welcome to submit their own "News from Around the County". Please submit your pictures and information to Human Resources at hrohn@adaircomo.com.