

**ADAIR COUNTY COMMISSION MINUTES**  
**TUESDAY, SEPTEMBER 10, 2019**  
**16TH DAY JULY ADJOURNED**

The Adair County Commission convened at 8:30 a.m. on September 10, 2019 in the Courthouse at Kirksville. Commissioner King and Commissioner Thompson were present. Presiding Commissioner Shahan was absent during the morning.

At 10:00 a.m., Commissioner King moved to approve the south Courthouse lawn for a POW/MIA ceremony. Commissioner Thompson seconded the motion. Both were in favor of the motion. The ceremony will take place at 2:00 p.m. on Friday, September 20, 2019.

At 11:00 a.m., the Commission participated in the ribbon cutting ceremony to officially open the Adair County Low Water Crossing on County Line Way, Bridge No. 0680007 – Project BRO – B001 (50). The ceremony was attended by members of the public and Howe Company, the bridge engineering firm.

At 1:30 p.m., the Commission met with Yvette Amerman from the Department of Natural Resources and Tim Frevert, Community Forestry Consulting from Jefferson City, Missouri. They had originally met with the Commission on August 7, 2019 to discuss a tree plan for the Adair County Courthouse lawn.

Mr. Frevert presented a power point presentation recommendation for tree removal and replacement for the Courthouse lawn. Hard copies of the presentation were presented to the Commission. Discussion included having a professional purchase the trees using a local source such as Logan Peckosh. He would know the proper size to purchase as well as how to properly plant the new tree.

Mr. Frevert stated that grants were available to remove and replace trees, but would not be offered again until June 2020. Truman State University applied for a grant this year and was still waiting to hear if they had been awarded any grant money. He stated there was a professional arborist in Columbia, Missouri and Hannibal, Missouri. They would be licensed and bonded to remove the large trees he has recommended for removal. They could possibly treat the elm trees as well to help with resistance to disease. Stumps should be removed. New trees should be watered well at planting and then continued to be watered to assist with their growth. Presiding Commissioner Shahan, mentioned the idea of a Memorial Tree program for the public.


Mr. Frevert stated that the fall of the year, particularly November, was a good time to plant trees on the north side of the property. Trees purchased with a root ball resulting from it being dug up as opposed to a tree that has been grown in a pot. When planted, the root ball should be even with the ground. With existing tree don't cover up roots with dirt as they need to breathe.

The Commission thanked Mr. Frevert and Mrs. Amerman for their help with the tree plan project. A copy of the tree plan will be posted on the Adair County website.

The Adair County Commission adjourned at 4:00 p.m. on September 10, 2019.

Continued on page 461

ATTEST:

  
County Clerk

  
Presiding Commissioner

**ADAIR COUNTY COMMISSION MINUTES  
TUESDAY, SEPTEMBER 10, 2019**

Continued from page 460

**Unscheduled Public Walk-Ins and other Non-Agenda Items for Tuesday, September 10, 2019:**

Bill Wernert – Road

Betty Durflinger – Glacier Road

Charles McFarland – Dog problem


IN REF. ORDER NO 15 Adair County Circuit Clerk Fees for August, 2019

IN REF. ORDER NO 16 Adair County Sheriff Fees for August, 2019

IN REF. ORDER NO 17 Adair County Tree Plan

*Tree Planting and Management Plan  
For Adair County Courthouse*

Kirksville, Missouri




August 2019

Objectives


- Locate and evaluate existing trees. Recommend replacements for all ash, which are susceptible to Emerald Ash Borer.
- Create a balanced distribution of trees on the grounds.
- Maintain views of the courthouse from perimeter streets.
- Maintain space required for monuments, light standards and other features.
- Increase diversity of tree species. Use mainly natives.
- Suggest management for new trees.

Existing Trees

Existing courthouse trees consist of thirteen large growing ash, pin oak, tulip poplar, and bald cypress, with 8 to 30-inch trunk diameter, and one lower growing redbud. The ash are susceptible to Emerald Ash Borer, which has been found in Adair County, and are not high quality specimens. Two pin oaks on the south side of the courthouse near Washington Street are crowded by two larger adjacent oaks. The remainder of the trees are in good to excellent condition. Several trees have dead branches.



The courthouse grounds are dominated by thirteen large trees. Five ash are susceptible to destructive insects, and two pin oaks are crowded by other trees.



The north side of the courthouse is treeless, with only limited space available for new trees.

Recommendations for Existing Trees


Remove three, 12-18-26" ash in the southwest corner of the grounds, which are susceptible to EAB and not good specimens.

Remove two, 8-12" pin oaks in front of the courthouse on Washington St. which are being crowded and overtopped by adjacent pin oaks.

Remove one 18" ash on the east side of the grounds near Franklin St. which is susceptible to EAB and not a good specimen.

Continued on page 462

ATTEST:

  
County Clerk

  
Presiding Commissioner

# ADAIR COUNTY COMMISSION MINUTES

## TUESDAY, SEPTEMBER 10, 2019

Continued from page 461

**Recommendations for Existing Trees, Cont.**

Temporarily retain two, 22-30" existing ash, one in the northwest corner of the grounds, and one near the southeast corner along Washington Street as shown on the drawing. Do not replace the ash in the northwest corner. Replace the ash in the southeast corner when desired with another large growing tree as shown.

Prune dead and low branches from established trees as required, perhaps every 3 years.

**Recommendations for New Trees**

Plant three Fall Fiesta (sugar) maples, two in the southwest corner, and one along Franklin Street, as shown on the drawing.

Plant four Rising Fire hornbeam along the north side of the courthouse, as shown.

Plant one redbud near the southwest corner of the courthouse as shown.

Plant one Autumn Brilliance serviceberry near the northeast corner of the courthouse as shown.

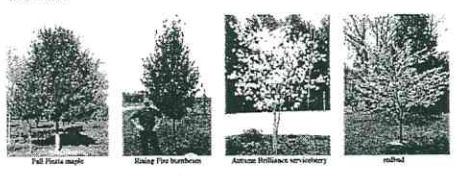
Begin regular watering for new trees, re-mulching, and pruning beginning the third year after planting.

**Tree List**

No. Needed	Common Name	Scientific Name	Recommended Size
3	Fall Fiesta maple	<i>Acer saccharum "Fall Fiesta"</i>	1 1/2" cal.
4	Rising Fire hornbeam	<i>Carpinus caroliniana "Ezbridge"</i>	1 1/2" cal.
1	redbud	<i>Cercis canadensis single stem</i>	1 1/2" cal.
1	Autumn Brilliance serviceberry	<i>Amelanchier arborea "Autumn Brilliance"</i>	1 1/2" cal.

Caliper = trunk thickness near groundline. 1 1/2" caliper trees should be approximately 10-12 feet tall, well branched. Trees may have balled and burlapped or container grown roots.

**Tree Palette**



**Alternate Species**

- red oak
- swamp white oak
- Green Mountain maple
- Commemoration maple
- Legacy maple
- Wildfire blackgum

**Approximate New Tree Costs**

9 deciduous trees, 1 1/2" caliper, balled and burlapped \$1800

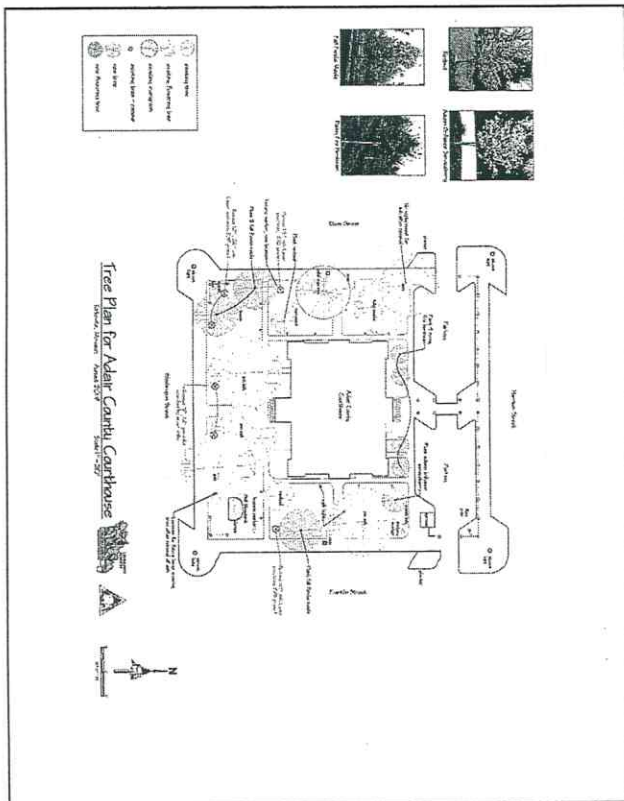
Not including removals

**Further Assistance**

For help with managing existing trees or planting new trees on the courthouse grounds, contact the Kirksville Office of the Missouri Department of Conservation.

**Yvette Amerman, Resource Forester**  
3500 S Baltimore, Kirksville, MO 63501  
660-785-2420 x 6517

Plan prepared by Tim Frevert, Community Forestry Consulting, 8/19 in cooperation with Forestry Division, Missouri Department of Conservation.



ATTEST: Sandra Collop  
County Clerk

[Signature]  
Presiding Commissioner