

**ADAIR COUNTY COMMISSION MINUTES**  
**MONDAY, OCTOBER 29, 2018**  
**12TH DAY OCTOBER REGULAR**

The Adair County Commission convened at 8:30 a.m. on October 29, 2018 in the Courthouse at Kirksville. All Commissioners were present.

At 9:30 a.m., the commission met with Glen Smith of Terra-Gen, an affiliate of the High Prairie Wind Project. Also present was Mark Shahan, citizen of Adair County. Steve May was unable to attend with Mr. Smith. The meeting was held for the approval of the amended resolution for revised crossing locations for the High Prairie Wind Farm. The original approval had been completed April 23, 2018.

Mr. Smith presented the Commission with documents that had been reviewed and approved by Adair County Legal Counsel, Ivan Schraeder. The documents included an updated cover page, Exhibit A - Appendix 1. Table 1 displaying the road designation (County or State) and the coordinates of the crossing; Appendix 2 illustrating a typical 'single pole' Gen Tie construction that will be in service at this Project; Appendix 3 illustrating the cross section of a typical underground 34.5 kv collection system trenched under a road surface; Appendix 4 illustrating the cross section of a typical bored underground 34.5 kv collection system crossing; and Appendix 5 illustration the typical conductor sag for a 345 kv conductor between two Gen Tie poles and the required 25-foot clearance above grade as required by the NESC.

The Commission once again reviewed the documents. After discussion, Commissioner King moved to accept the amendment to Order No. 2018-1. Commissioner Thompson asked if Mr. Smith was aware of any legislation to repeal Revised Statute 229.100 of Missouri. Mr. Smith said he was not. Commissioner Thompson then seconded the motion. Presiding Commissioner Pickens concurred. All voted in favor of the motion. All members of the Commission signed the document. The County Clerk then signed and attested the document. A copy was given to Mr. Smith.

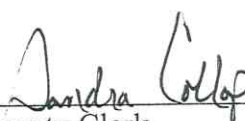
Mr. Smith thanked the Commission for continuing to support the project. He stated that delivery of the first 10 wind turbines was scheduled for March, 2020 with an early May, 2020 construction date. On-line commercial service date will be November-December, 2020.

The Adair County Commission adjourned at 4:00 p.m. on October 29, 2018.

**Unscheduled Public Walk-Ins and other Non-Agenda Items for Monday, October 29, 2018:**

None

Continued on page 230

ATTEST:   
County Clerk

  
Presiding Commission




ADAIR COUNTY COMMISSION MINUTES  
MONDAY, OCTOBER 29, 2018

Continued from page 230

IN REF. ORDER NO 9 Exhibit A – High Prairie Wind Project County Road Crossing Report and Plan

EXHIBIT A



High Prairie Wind Project  
County Road Crossing Report and Plan  
For  
Adair County, Missouri  
October 29, 2018

Adair County

Table of Contents

- 1. Introduction of the Project
- 2. Standards and Procedures regulating the Project
- 3. Road Crossings
- 4. Conclusion

Appendices

- i. Appendix 1
- ii. Appendix 2
- iii. Appendix 3
- iv. Appendix 4
- v. Appendix 5

1. Introduction of the High Prairie Project

TG High Prairie, LLC, an affiliate of Terra-Gen® is developing the High Prairie Wind Project (the "Project") located in Schuyler and Adair Counties, Missouri. The Project is expected to be in operation by 2020 with a total capacity of up to 400 megawatts of generation. To date, TG High Prairie has secured over 70,000 acres of wind lease option rights with over 200 landowners in Schuyler and Adair Counties.

TG High Prairie, LLC, is pleased to present this County Road Crossing Report and Plan which provides relevant safety and design information in support of its assent request. The report identifies where the Project proposes to cross county roads and highways in Adair County (the "County"). The Project is also submitting a Letter of Assurance to the County for the use of the roads, a draft Road Maintenance and Use Agreement and Resolution granting the requested assents. We look forward to working with the County Commission and staff on this matter.

The Project has been collecting meteorological data from towers erected in the area for over seven years. The wind resources are robust and will provide to the market an abundant supply of affordable electric energy generated from wind. With the construction of ATXI's 345 kV Mark Twain transmission line, the Project can build over 400 MW of wind energy generation in the area.

The Project is in the process of finalizing acquisition of the necessary land rights and completing the transmission studies. Due to positive market conditions, TG High Prairie, LLC anticipates beginning construction on the Project in 2019 and achieving commercial operation in 2020. The Project will include up to 200 wind turbine generators. The time is ripe for the Project to request the necessary assents.

Each wind turbine generator will be on private property with private access roads to the turbines. A system of underground cables will collect the power generated at each wind turbine and connect it to a Project substation (the "Collection System"). The substation will be located geographically to collect all the energy. The substation will be on private property. At the Project's substation, the electric energy gathered in the Collection System will be "stepped up" in a transformer from 34.5kV to 345 kV.

From the Project's substation, the energy will then be transmitted to ATXI's Mark Twain 345kV line via above ground ("overhead") conductors. If there are two substations they will be connected with 345kV overhead conductors. These overhead conductors linking the wind farm substations to the transmission line will be owned by the Project and are commonly referred to as a Gen Tie. At the point where the Gen Tie connects to the yet to be built Mark Twain transmission line, ATXI will own a switchyard, located on private property, to connect the Project to the 345kV line.

Private land rights are being obtained from the landowners for the underground collection system, the substations, the Generation Tie line ("Gen Tie"), and switchyard. Participation in the Project, by any landowner, is completely voluntary.

However, it will be necessary for the Projects Gen Tie and the Collection System to cross the public right of way. Missouri Revised Statute 229.100 holds that before electric conductors (underground Collection System and overhead Gen Tie) can be installed across any public road of any county, the assent of a majority of the County Commission shall be obtained.

\*Terra-Gen® is a successful renewable energy company, which focuses on developing, owning and operating utility scale wind and solar generation projects across the United States. Terra-Gen owns over 1,000 megawatts of wind, solar and geothermal projects.

Continued on page 232

ATTEST:   
County Clerk

  
Presiding Commission



ADAIR COUNTY COMMISSION MINUTES  
MONDAY, OCTOBER 29, 2018

Continued from page 231

2. Standards and Procedures Regulating the Project

The Project will ensure compliance with any and all applicable state and county regulations. The Project is designed to meet or exceed the requirements of the National Electrical Safety Code (NESC). The NESC is the relevant safety standard by which the County will evaluate this request for assent. The applicable edition is the 2017 Edition as approved by the American National Standards Institute on August 26, 2016, as modified by Errata thereto issued on March 31, 2017, and published by the Institute of Electrical and Electronics Engineers, Inc., 3 Park Avenue, New York, NY 10016-5997.

The NESC's purpose is "the practical safeguarding of persons...and...property during the installation, operation and maintenance of electric supply...facilities..." (NESC-2017, Section 1.0.1(A)). It is the Project's responsibility to insure the above ground Gen Tie, and underground Collection System will be located and constructed in a manner that will not interfere with the safe use and maintenance of the public roads in Adair County.

Section 232 of the NESC provides the relevant requirements for the minimum vertical clearance required from the highest point on the roadway to the maximum sag of the lowest conductor. Using the applicable NESC provisions, a minimum clearance of 25 feet is required over any roadway for the Projects 345kV Gen Tie.

Section 252 of the NESC provides requirements for minimum depth under the roadway to the buried conductor installed in conduit. Using the applicable NESC provisions, a minimum depth of 48 inches is required under any roadway for the Projects Collection System.

The Project will use insulated underground cabling typically used by the wind industry for its buried Collection System. The Project will build the above ground Gen Tie utilizing single pole, single circuit structures. No H frame wooden structures will be used.

3. Road Crossing Locations and Illustrations

Based on information gathered thus far in the preliminary design phase, and based on maps provided from public sources, the Project team has determined the Gen Tie will cross the County roadways (in the locations described in Table 1, below). The underground Collection System in Adair County will be buried in the public right of ways crossing County roadways in the locations described in Table 1, below.

The design process for the wind farm is dynamic. New information can influence the final placement of the underground Collection System crossings as the land acquisition effort is finalized. There are a number of other variables that can impact turbine placements. Such "micro siting" adjustments are typical as the Project design of a wind farm is finalized.

3.1 Variance for Road-Crossings

This Plan, in form and substance, represents what the Project will build, where it will build and when it will be built. However, like any large project there will be some changes. The Project commits to construct the road-crossings within 50 (fifty) yards on either side of the road-crossing coordinates provided herein as Table 1 below. In the event that a road-crossing coordinate is within 50 yards of a cross road, the 50-yard variance will be reduced below 50 yards to equal the distance from the listed coordinate to the cross road and the cross road will be the limit of the deviation. However, in recognition that siting of individual wind turbines uncovers topographical or other obstacles, upon County approval by a representative designated by the County Commission, the Project can locate crossings outside of the 50-yard variance where reasonable and appropriate, except in an event where a crossroad would limit the variance distance.

3.2 Finalization of Road-Crossings

After all necessary land rights have been executed and the locations of the wind turbines are finalized, but prior to the start of construction all relevant data will be verified in the field to ensure compliance with the assent granted by the County Commission.

After the Project is constructed and is in operation, the Project will cause an 'as built' report to be created and submitted to the County Commission of Adair County. This report will demonstrate the Project's road-crossings are compliant with the standards and procedures contained in this Plan and are within the locations approved and acknowledged by the County Commission.

Each of the overhead or underground crossing locations above ground or buried, identified during the preliminary design phase are listed Table 1 found below.

Each crossing shown in Table 1 has a corresponding icon on the map in Appendix 1. Table 1 displays the road designation (County or State) and the coordinates of the crossing.

Appendix 2 illustrates a typical 'single pole' Gen Tie construction that will be in service at this Project. Appendix 3 illustrates the cross section of a typical underground 34.5 kV collection system trenched under a road surface. Appendix 4 illustrates the cross section of a typical bored underground 34.5kV collection system crossing.

Appendix 5 illustrates the typical conductor sag for a 345kV conductor between two Gen Tie poles and the required 25-foot clearance above grade as required by the NESC.

3.3 Decommissioning of Electrical Assets in the Public Right-of-Way

In the event that wind turbines are decommissioned in whole or part, the Project will remove improvements within the public rights-of-way associated with the decommissioned wind turbines as follows: (a) all above grade improvements shall be fully removed; and (2) underground improvements shall be removed to a depth of thirty-six (36) inches below grade.

4. Conclusion

TG High Prairie, LLC has provided the foregoing information in support of its request to the County Commission to grant an assent required by Section 229.100, of the Revised Statutes of Missouri. Missouri law charges county commissions with the authority to ensure the safety of utility road crossings across county roads. The focus of this Plan is on the placement of the Project's facilities through, on, under or across the public right of way.

The Plan requests necessary flexibility for micro-siting adjustments to the crossings as the Project progresses. The Project will submit a report to the County after the Project is built and in operation demonstrating the Project is in accordance with applicable safety standards and within the locations the assents granted for road crossings.

The Project has provided a Resolution for the assents and a Road Maintenance and Use Agreement with the County to ensure any road damage caused by the construction of the Project is repaired to its original pre-construction condition. Both Documents will reference this Report.

Continued on page 233

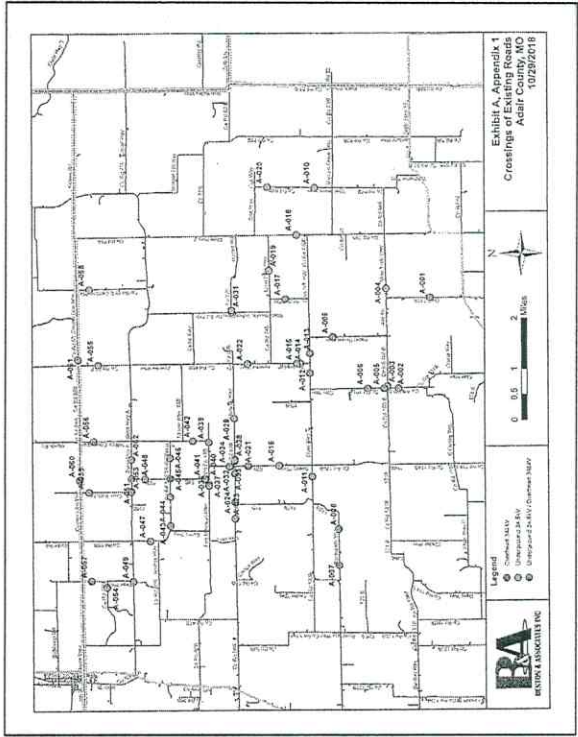
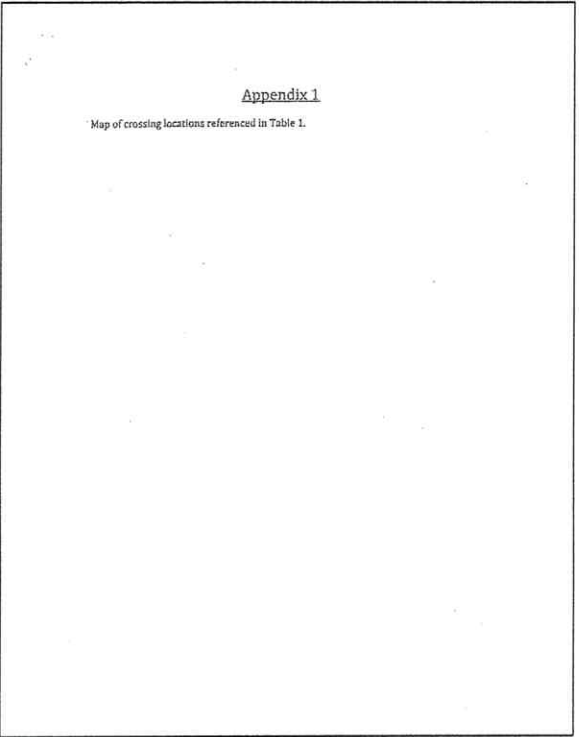
ATTEST:  County Clerk  Presiding Commission

ADAIR COUNTY COMMISSION MINUTES  
MONDAY, OCTOBER 29, 2018

Continued from page 232

Table 1					
Crossing Number	Latitude	Longitude	Road Name	County Road	Crossing Cable
A-001	40.245442	-92.426111	Hazel Green Way / Co Rd 968	County	Underground 34.5kV
A-002	40.255381	-92.450079	Clay Way / Co Rd 101B	County	Underground 34.5kV
A-003	40.254517	-92.459275	Benton Way / Co Rd 102 B	County	Underground 34.5kV
A-004	40.258888	-92.422818	Mule Train Way / Co Rd 44X AB	County	Underground 34.5kV
A-005	40.259426	-92.460152	Clay Way / Co Rd 101B	County	Underground 34.5kV
A-006	40.264027	-92.460155	Clay Way / Co Rd 101B	County	Underground 34.5kV
A-007	40.272205	-92.524885	Normandy Way / Co Rd 122 B	County	Underground 34.5kV
A-008	40.272415	-92.511778	Normandy Way	County	Underground 34.5kV
A-009	40.273921	-92.440921	Hazel Green Way / Co Rd 968	County	Underground 34.5kV
A-010	40.278923	-92.380991	Wild Horse Way / Co Rd 84B	County	Underground 34.5kV
A-011	40.279825	-92.402574	State Hwy T	State	Underground 34.5kV
A-012	40.280334	-92.454402	State Hwy T	State	Underground 34.5kV
A-013	40.280369	-92.446099	State Hwy T	State	Underground 34.5kV
A-014	40.283014	-92.450799	Apache Way / Co Rd 64B	County	Underground 34.5kV
A-015	40.284001	-92.450802	Apache Way / Co Rd 64B	County	Underground 34.5kV
A-016	40.284049	-92.460157	State Hwy I	State	Underground 34.5kV
A-017	40.287213	-92.420586	Arctic Way / Co Rd 98B	County	Underground 34.5kV
A-018	40.28908	-92.48851	Sperry Way / Co Rd 62B	County	Underground 34.5kV
A-019	40.291731	-92.415978	Lone Pine Way / Co Rd 74B	County	Underground 34.5kV
A-020	40.292173	-92.385735	Wild Horse Way / Co Rd 84B	County	Underground 34.5kV
A-021	40.297749	-92.489601	Sperry Way / Co Rd 62B	County	Underground 34.5kV
A-022	40.297848	-92.450817	Apache Way / Co Rd 65B	County	Underground 34.5kV
A-023	40.301482	-92.507755	Morgan Way / Co Rd 58B	County	Underground 34.5kV
A-024	40.301459	-92.501885	Morgan Way / Co Rd 58B	County	Underground 34.5kV
A-025	40.301518	-92.491157	Morgan Way / Co Rd 63B	County	Underground 34.5kV
A-026	40.302537	-92.506409	Morgan Way / Co Rd 63B	County	Underground 34.5kV
A-027	40.30154	-92.48619	Morgan Way / Co Rd 63B	County	Underground 34.5kV
A-028	40.301542	-92.486231	Morgan Way / Co Rd 63B	County	Underground 34.5kV
A-029	40.301643	-92.47026	Morgan Way / Co Rd 63B	County	Underground 34.5kV
A-030	40.302127	-92.431578	Willametteville School Way / Co Rd 71B	County	Underground 34.5kV
A-031	40.302208	-92.480766	Hornet Way / Co Rd 73B	County	Underground 34.5kV
A-032	40.302743	-92.488092	Sperry Way / Co Rd 442B	County	Underground 34.5kV
A-033	40.302908	-92.48869	Sperry Way / Co Rd 442B	County	Underground 34.5kV
A-034	40.303009	-92.488689	Sperry Way / Co Rd 442B	County	Underground 34.5kV
A-035	40.306789	-92.435529	Fort Madison Way / Co Rd 48B	County	Underground 34.5kV
A-036	40.306789	-92.495159	Fort Madison Way / Co Rd 48B	County	Underground 34.5kV
A-037	40.306789	-92.495183	Fort Madison Way / Co Rd 48B	County	Underground 34.5kV
A-038	40.30679	-92.495803	Fort Madison Way / Co Rd 48B	County	Underground 34.5kV
A-039	40.306823	-92.479736	Fort Madison Way / Co Rd 48B	County	Underground 34.5kV
A-040	40.309687	-92.49329	Atlantic Way / 50B	County	Underground 34.5kV
A-041	40.309933	-92.493209	Atlantic Way / 50B	County	Underground 34.5kV
A-042	40.313305	-92.475266	Willow Creek Way / 54B	County	Underground 34.5kV
A-043	40.319664	-92.51012	Trinity Way / Co Rd 52B	County	Underground 34.5kV

Table 1 (cont.)					
A-044	40.319693	-92.499796	Trinity Way / Co Rd 52B	County	Underground 34.5kV
A-045	40.3197	-92.499133	Trinity Way / Co Rd 52B	County	Overhead 34.5kV
A-046	40.319726	-92.485534	Trinity Way / Co Rd 52B	County	Underground 34.5kV
A-047	40.325353	-92.515787	Trinity Way / Co Rd 52B	County	Underground 34.5kV
A-048	40.326799	-92.493256	Atlantic Way / 50B	County	Underground 34.5kV
A-049	40.330259	-92.536002	State Hwy A	State	Underground 34.5kV
A-050	40.330597	-92.497786	State Hwy A	State	Underground 34.5kV
A-051	40.33063	-92.493041	State Hwy A	State	Overhead 34.5kV
A-052	40.330649	-92.486021	State Hwy A	State	Underground 34.5kV
A-053	40.330748	-92.497917	Crow Barn Ln	County	Underground 34.5kV
A-054	40.337587	-92.532618	Maple Way / Co Rd 47B	County	Underground 34.5kV
A-055	40.339871	-92.45106	Apache Way / Co Rd 67B	County	Underground 34.5kV
A-056	40.342121	-92.479236	Willow Creek Way / Co Rd 56B	County	Underground 34.5kV
A-057	40.341874	-92.530263	Easy Way / Co Rd 41B	County	Underground 34.5kV
A-058	40.342413	-92.422754	Cardinal Way / Co Rd 68B	County	Underground 34.5kV
A-059	40.342655	-92.497947	Crow Barn Ln	County	Underground 34.5kV
A-060	40.345227	-92.493592	County Line Way / Co Rd 57B	County	Overhead 34.5kV
A-061	40.345566	-92.44905	County Line Way / Co Rd 66	County	Underground 34.5kV



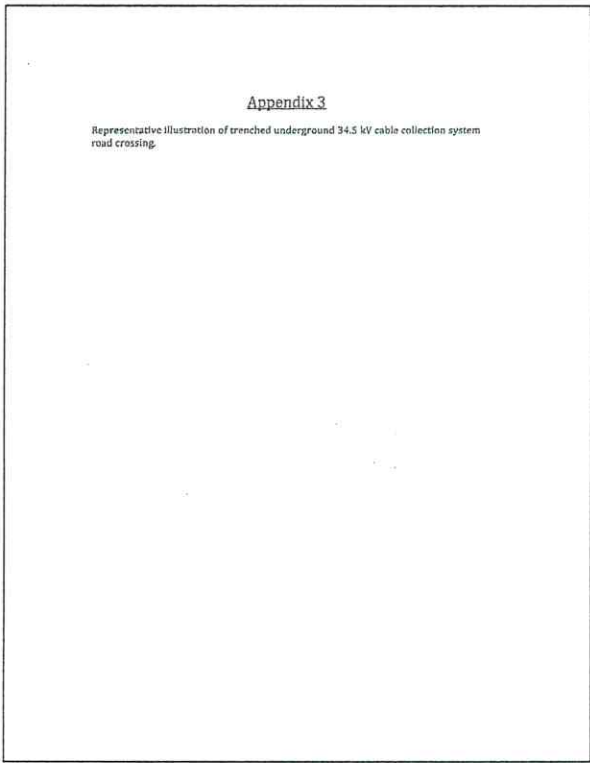
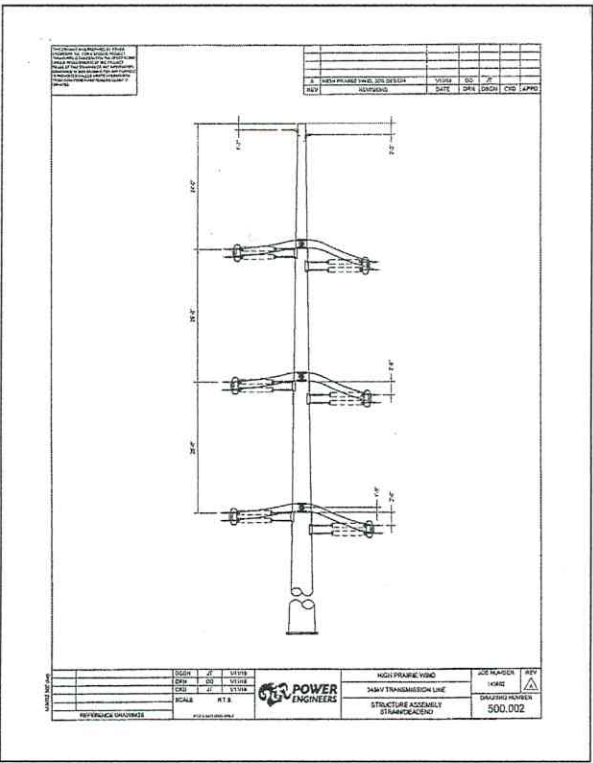
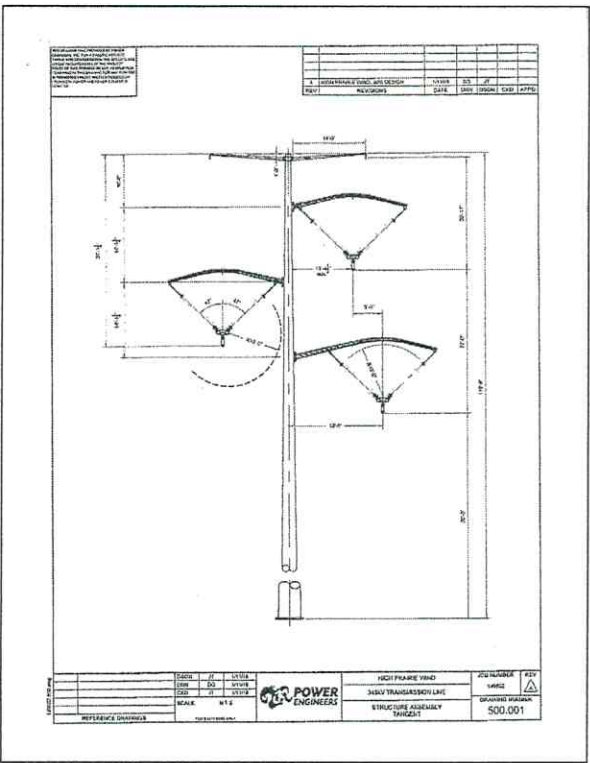
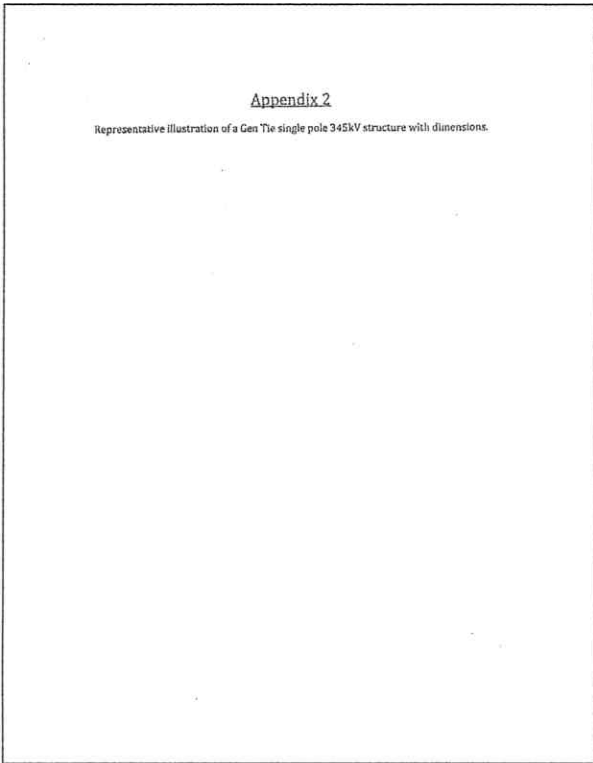
Continued on page 234

ATTEST: Dandra Collop  
County Clerk

Stanley Pickens  
Presiding Commission

ADAIR COUNTY COMMISSION MINUTES  
MONDAY, OCTOBER 29, 2018

Continued from page 233

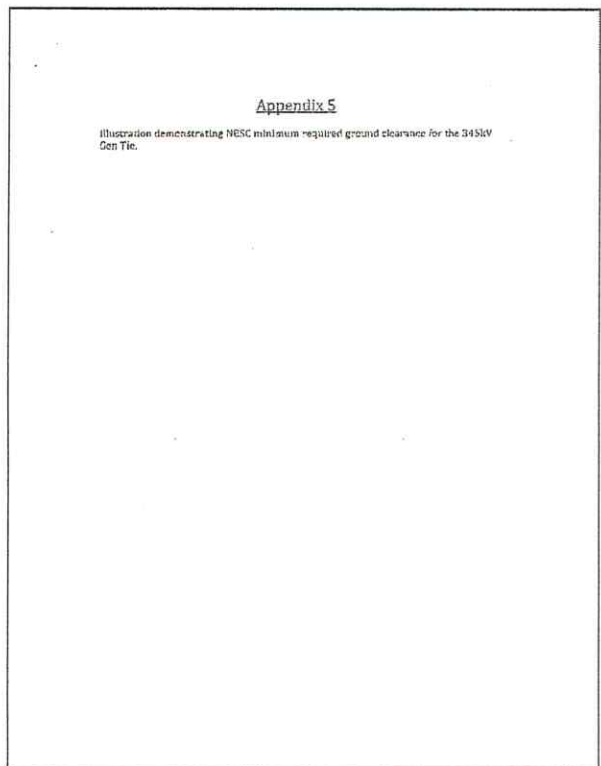
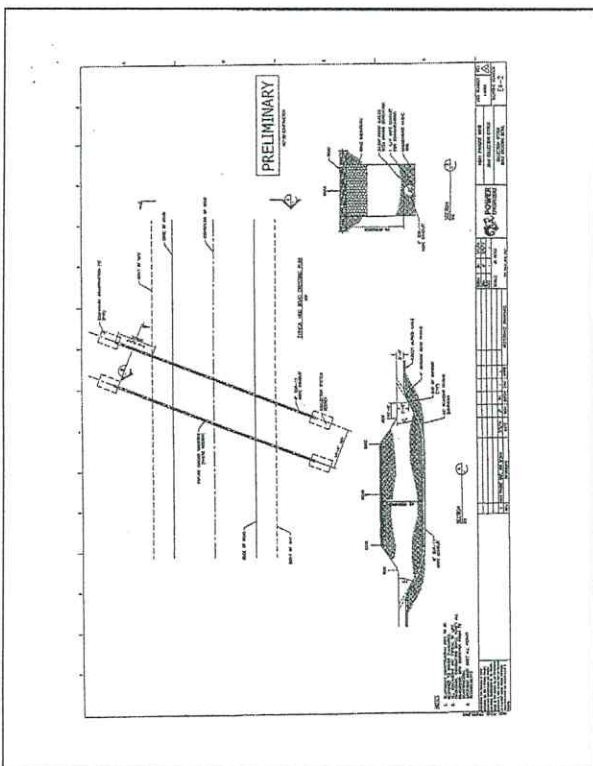
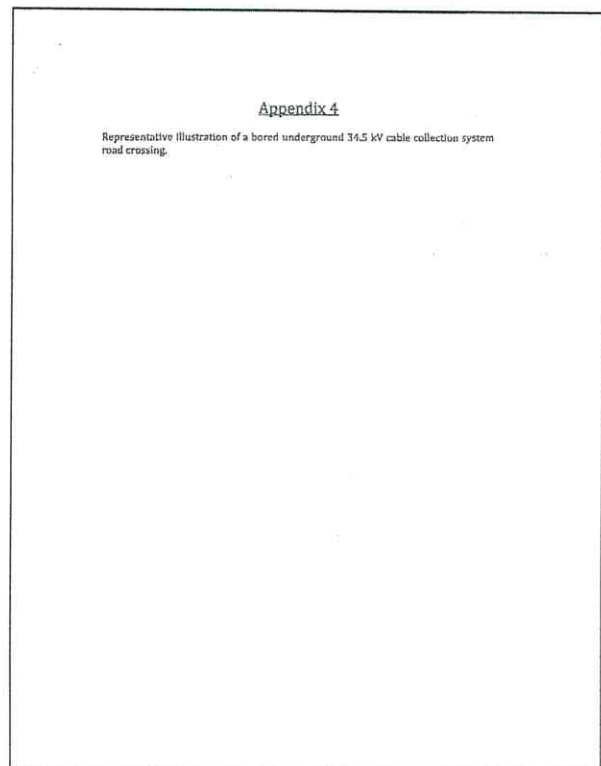
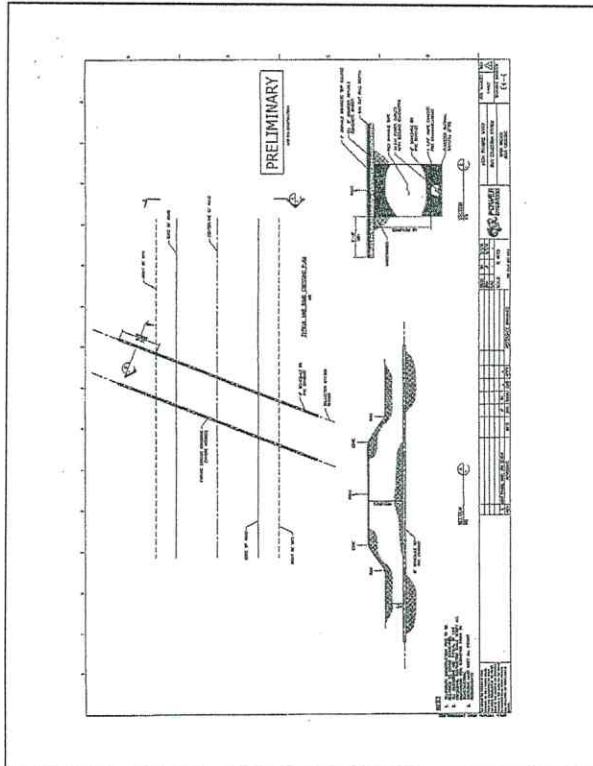


Continued on page 235

ATTEST: Dan Colap County Clerk Stanley Pickett Presiding Commission

ADAIR COUNTY COMMISSION MINUTES  
MONDAY, OCTOBER 29, 2018

Continued from page 234



Continued on page 236

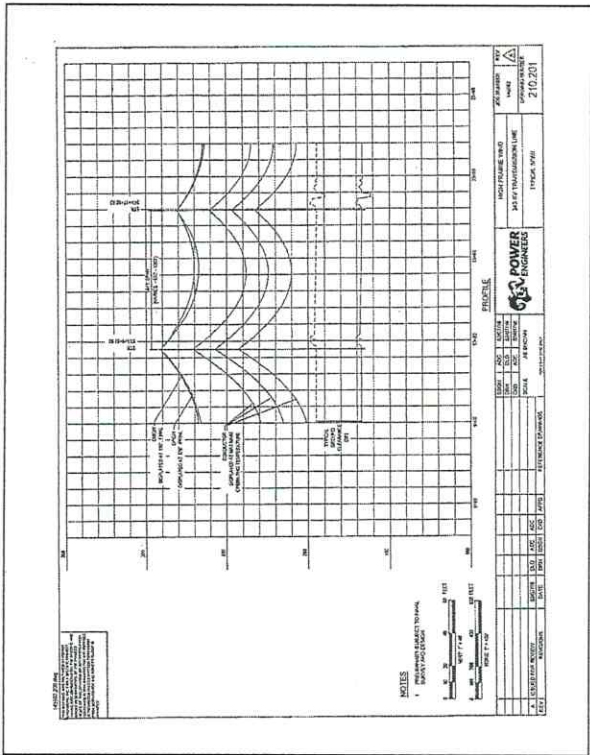
ATTEST: Andrea Collop  
County Clerk

Stanley Pickers  
Presiding Commission



ADAIR COUNTY COMMISSION MINUTES  
MONDAY, OCTOBER 29, 2018

Continued from page 235



ATTEST: Danden Collop  
County Clerk

Stanley Pickens  
Presiding Commission