

# EMPLOYEE NEWSLETTER

## JUNE 2022



Important 2022 Dates	
Sunday June 19	Father's Day
Monday June 20	County Offices Closed Juneteenth Holiday
Tuesday June 21	First Day of Summer
Monday July 4	County Offices Closed Independence Day

Birthday Wishes		
06/09	Riley Merdinian	Sheriff's Office
06/12	Madison Easley	Sheriff's Office
06/21	Chris Stivers	Sheriff's Office
06/25	Brian Blaise	Sheriff's Office
06/28	Lisa McKenzie	Sheriff's Office
06/29	Jeff Waddle	Road & Bridge



Service Anniversaries			
06/05	19 yrs.	Randall Watson	Road & Bridge
06/09	2 yrs.	Teresa Sullivan	Collector's Office
06/11	6 yrs.	Juan Chairez	Sheriff's Office



Welcome New Employees	
Kristopher Williams	Sheriff's Office
Arionne Coleman	Sheriff's Office
Stephen Zicko	Sheriff's Office





## MEMBER PORTAL REGISTRATION GUIDE

The GBS Member Portal gives you the ability to review claims, request a new ID card, or send a secure message to GBS support online.

To access the Member Portal, you'll first need to register as a user:

1. Navigate to [mygbshealth.com](http://mygbshealth.com), then beneath the gold Submit button select Register Account.
2. Read the License Agreement, then select Accept.
3. Enter your Member ID or Social Security Number (SSN), last name, and date of birth in the fields provided, then select Next.
  - NOTE: If you are a dependent 18 years or older, select the checkbox next to Are you a dependent? and fill out the fields accordingly.
4. Enter your username, password, security questions, and security answers in the fields provided, then select Next.
5. Review the information displayed and if it is correct select Finish.
6. In the dialog box that appears, select either the Paperless or Paper Explanation of Benefits (EOB) option.
7. Select Continue to complete the registration process and enter the Member Portal.

*Dependents must be 18 years or older to register for the portal. Though minor dependents cannot register for the portal, their claim information can be found in the primary policyholder's account. Primary policyholders will not have access to an adult dependent's account unless they are granted access by said dependent.*

---

## ALLERGY SHOT MEDICAL INSURANCE BENEFIT



The County medical plan provides members with \$5 allergy injections\* from any in-network provider.

*\*The \$5 co-pay applies to the injection only. Charges for doctor visits, testing, or other services may apply.*

Receiving these shots works in three simple steps:

1. **Symptoms triggered.** When the member begins experiencing allergy symptoms (itchy/watery eyes, sneezing, running nose, etc.), they speak with their physician who determines what they're allergic to and what treatment option is best for them.
2. **Injections ordered.** Once the physician determines that injections are the best option for the member, the member will schedule an appointment to receive the injections. This appointment is typically recurs every week or every other week.
3. **Injections received.** The member will pay a \$5 co-pay for the allergy injection. An additional office visit co-pay or other charges may apply to the appointment.

If you have any questions about how to use this benefit, contact GBS at (800) 995-3569.



## DURABLE MEDICAL EQUIPMENT BENEFIT

GBS Plan Members are covered at 100%\* for medically necessary durable medical equipment through **HOMELINK**. Employees have your provider contact HOMELINK at **866-750-2723** for pre-certification and to order equipment.



### Home Medical Equipment & Supplies

- Manual and Power Wheelchairs
- Power Scooters
- Walkers, Canes and Crutches
- Lift Chairs, Hospital Beds and Patient Lifts
- Bathroom Safety Items and Accessories
- Daily Living Aides
- Oxygen Equipment
- CPAP/BiPAP Equipment
- Diabetic Shoes and Inserts
- Compression Hose and Socks
- Braces, Splints and Wound Dressings
- Nebulizer Machines
- Breastfeeding Pumps
- Mastectomy Products
- Incontinent Supplies
- Bariatric/Heavy Duty Medical Equipment
- Rehabilitation Supplies



### Health & Respiratory Services

- Respiratory Therapist and Certified Fitters
- CPAP/BiPAP Set-Ups and Education
- Education on Disease Process/ Equipment
- Sizing and Fitting of Braces and Splints
- Fitting of Mastectomy/ Orthotics {Certified fitters}
- 24/7 Emergency Care Services
- In -House Customer Service and Billing for added convenience
- ABC Certified Fitters of Diabetic/Therapeutic Shoes and Inserts



**\*Have your provider call HOMELINK at 1-800-482-1993 to pre-certify and order equipment prescribed by your provider.**



Employees often want benefit information but have limited time. So CERF has presented a series of Quick Takes on various CERF Pension topics.

Follow the links below for short videos relating to your CERF Pension.

Beneficiary Forms

<https://www.youtube.com/watch?v=XRUeuEu0BU0>

Enrollment and Participation

<https://www.youtube.com/watch?v=OIG0VAue018>

Vesting

<https://www.youtube.com/watch?v=AGCydUltHOo>

Death Benefits

<https://www.youtube.com/watch?v=lWEyc5EX7Bc>

Contribution Refunds

<https://www.youtube.com/watch?v=8ZAliJ-iH1M>



**CERF and EMPOWER RETIREMENT INFORMATIONAL WEBINARS**

These webinars are a great way for you to become more knowledgeable about your CERF Public Pension and 457/401 Retirement Savings benefit without having to leave the comfort of your office. The next webinar is schedule for:



**COUNTY EMPLOYEES'  
RETIREMENT FUND**

**Pre-Retirement Seminar (Online)**

**June 9, 2022**

**2:00pm - 4:00pm**

***(Empower sent registration information to employees)***



Previous online Benefit Fairs and Pre-Retirement Seminars have been recorded and are available at [mocerf.org](http://mocerf.org).



## Latest Courthouse Pictures



*Former Veterans Office (1st Floor)*

*Part of the Veterans Office will be converted into a handicap accessible unisex bathroom (framed in area pictured front right).*



*Old and new woodwork is being stained and top coated.*



*The maintenance shop has been temporary moved to the 1st floor west courtroom.*



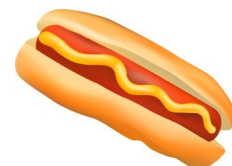
*Another door has been added to the Assessor's Office (see left side - picture was taken from the main office entrance).*



*The Reorder's Office (as well as other offices) will have drop ceilings installed but the top windows will remain visible.*



*The Treasurer's Office will now have an office area. (see the half wall -back left)*



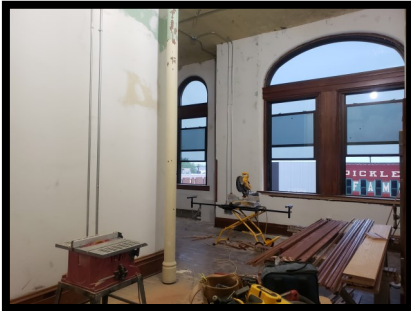
## Latest Courthouse Pictures



*The Mapping Office is ready for paint.*



*The woodwork in the 3rd floor courtroom is currently being refinished. The carpet has been removed and the hard wood floors will be restored.*



*The north office area in the Circuit Clerk's Office. The 1/2 circle top windows will remain visible.*



*The room added in the back corner (left) of the Circuit Clerk's Office has been removed. This is the main office space - the office area closest to the elevator.*



*Presiding Judge's Administrative Office Area (3rd Floor). The wood work was still drying when this picture was taken.*



*Before and after pics of the second floor men's bathroom. The floor has been replaced and looks much safer!*



*Areas with original hard wood flooring (mainly offices and courtrooms) will be restored. All other areas will be stained concrete with one of the three options shown left.*

